

Waiheke Local Board

Community Forum

What: Community Forum
Where: Waiheke Local Board offices, 10 Belgium Street, Ostend; MS Teams
When: 14 May 2025 5:30pm – 7:00pm

Members: Kylee Matthews (Deputy Chair)
 Robin Tucker

Apologies: Cath Handley (Chair)
 Bianca Ranson
 Paul Walden

Link to recording: <https://youtu.be/-MRA0BU4-H4>

Time	Topic	Speaker(s)	Proposed outcome(s)
5:30pm	Karakia and introductions.	Deputy Chair Kylee Matthews	Formally open the meeting with Karakia Whakamutanga
5:35pm	Old Lions Club building, 23-35 Nikau Rd – kitchen repairs	Mereana Berger <i>Ngāti Paoa Iwi Trust</i>	<p>Members were provided with an overview of necessary repairs to the kitchen at the property at 23-35 Nikau Rd, leased from Auckland Council by Ngāti Paoa Iwi Trust, with accompanying images.</p> <p>The kitchen is the only part of the building that has not been restored. It has a false roof and wall, which block natural light, and the cabinetry is falling apart. Moreover, the kitchen was used by the previous tenants to store costumes, which breaches tikanga for future use as a food preparation / manaakitanga space. Ngāti Paoa Iwi Trust are seeking support for their local board grant application to complete repairs, or for the work to be funded by the local board or Auckland Council, as a Heritage project.</p>
5:45pm	Waiheke Resources Trust social enterprise The Compost Co relocation	Mike Fogarty <i>Compost Co Lead</i> Montana Lamb <i>Zero Waste Manager, Waiheke Resources Trust</i>	<p>Members were informed of the requirement to move The Compost Co and presented with options for a temporary location.</p> <p>The Compost Co has been located on private land at Te Motu Vineyard for five years. The owner has asked them to relocate as the land is required for another use. Waiheke Resources Trust has eight weeks to find an alternative location. As a short/ medium term solution Compost Co proposed reserve land between the Waiheke Island Riding Club and Waiheke Cemetery.</p>

Time	Topic	Speaker(s)	Proposed outcome(s)
			Members noted concern about this option due to the significant process required to develop the Rangihoua Reserve and Onetangi Sports Park Reserve Management Plan. They suggested that WRT could approach the Riding Club themselves and also consult Parks and Community Facilities staff about other options on public land. It was also suggested that they come to public forum at the next business meeting.
6:15	Closing karakia.	Deputy Chair Kylee Matthews	Formally close the meeting <i>Unuhia, unuhia</i> <i>Unuhia ki te uru tapu nui</i> <i>Kia wātea, kia mama, te ngākau, te tinana, me te wairua, ite te ara takatū</i> <i>Koia rā e Rongo</i> <i>Whakairia ake ki Runga</i> <i>Kia tina! (TINA)</i> <i>Haumi ē, Hui ē, Tāike ē!</i>



NGĀTI PAOA IWI TRUST

TE WAERO AWE

HOUKURA

Wednesday 14 May, 2025











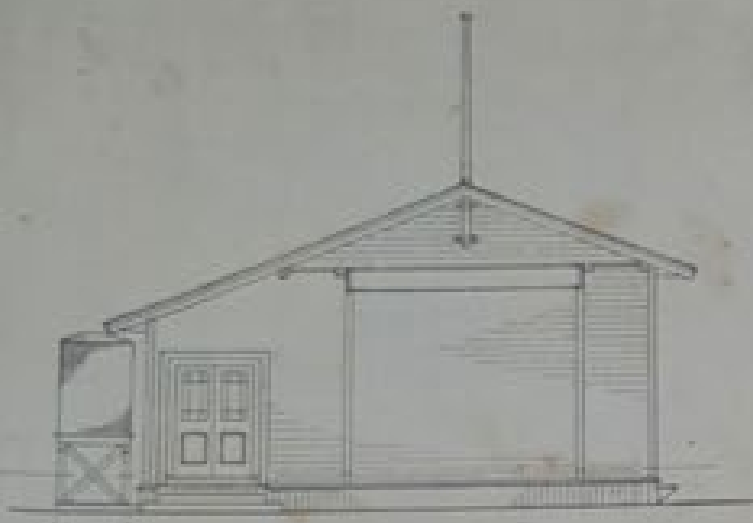








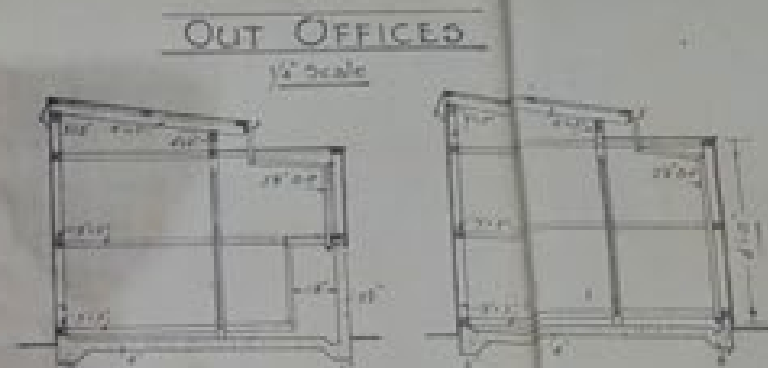
S.W. ELEVATION



S.E. ELEVATION



N.E. ELEVATION



OUT OFFICES

1/8" Scale

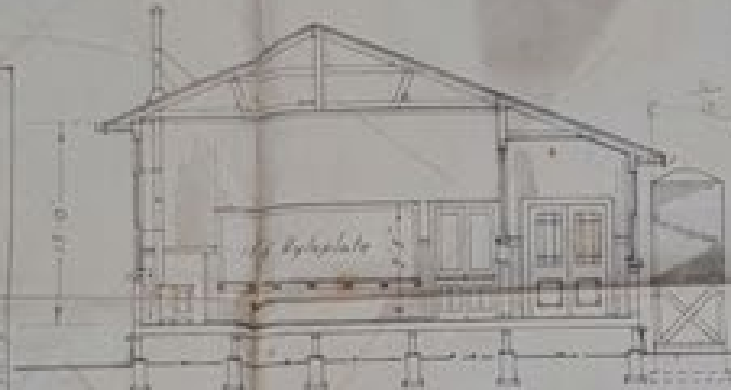
SECTIONS



BOYS

PLANS

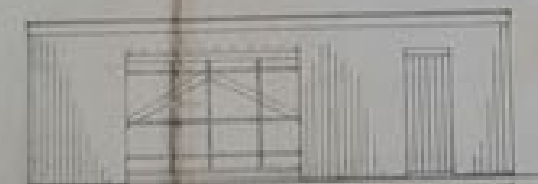
GIRLS



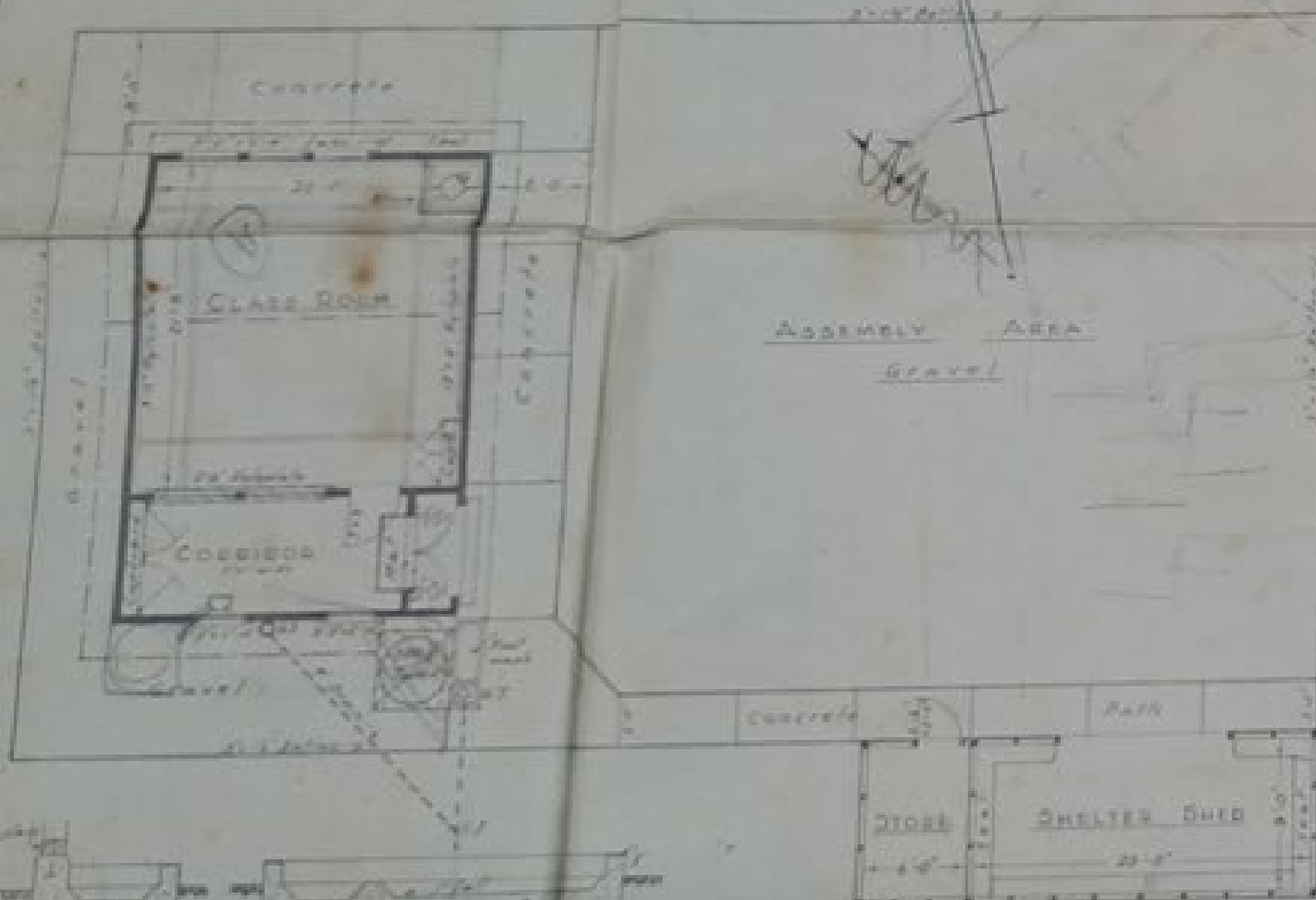
SECTION



SECTION



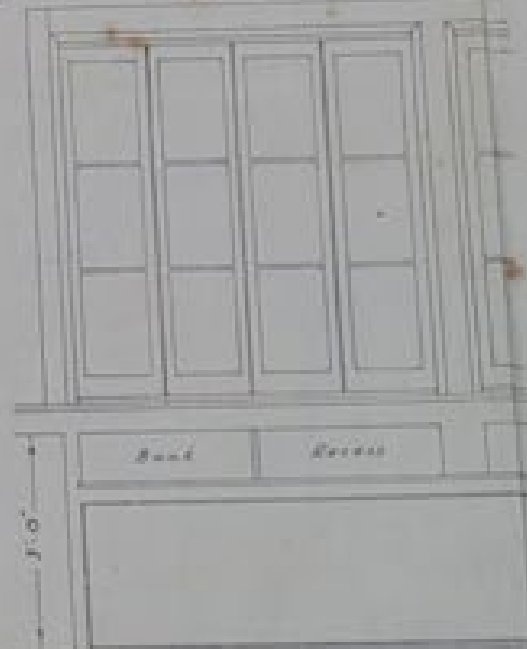
FRONT ELEVATION



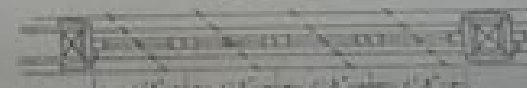
PLAN

BORROWED LIGHTS

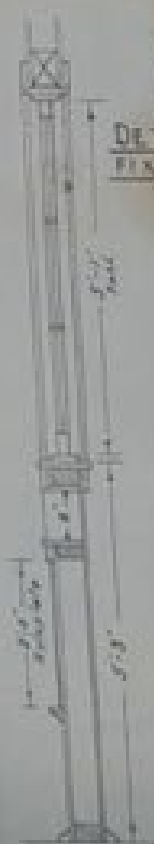
1/8" Scale



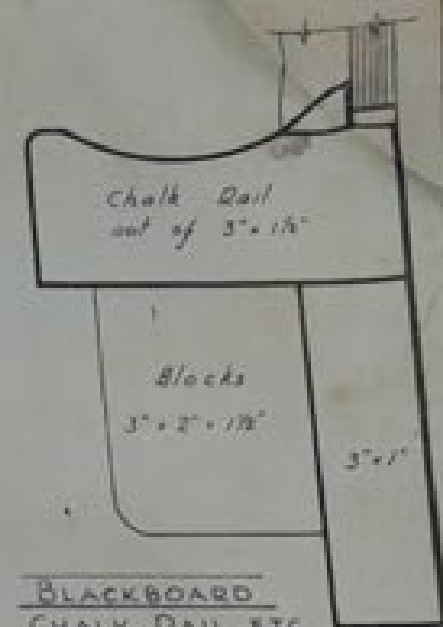
ELEVATION



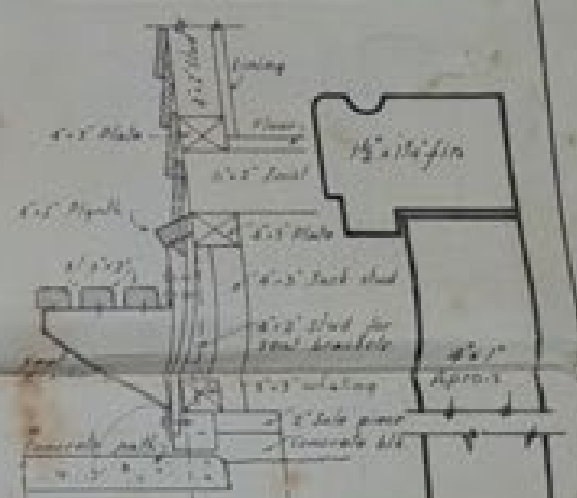
SECTION PLAN



SECTION

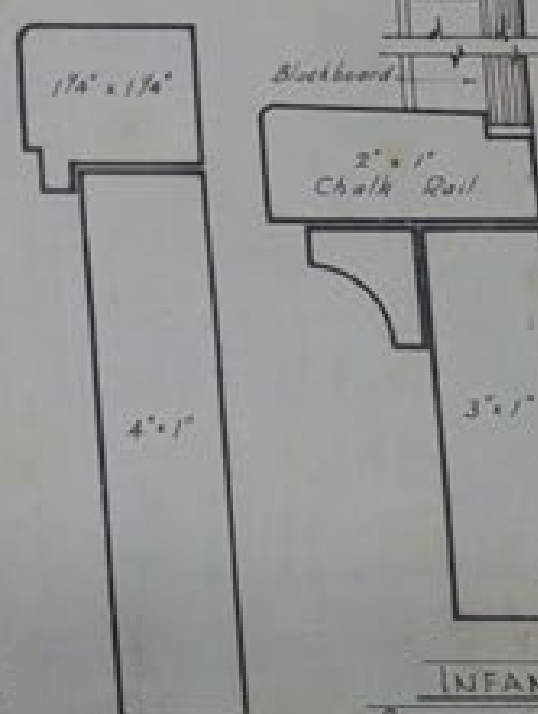


BLACKBOARD
CHALK RAIL ETC

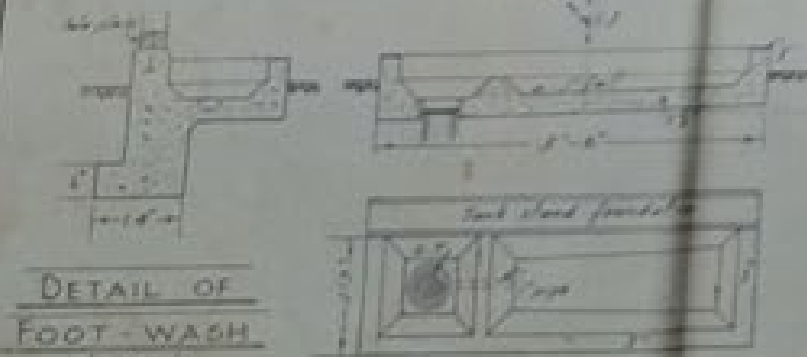


DETAIL SHOWING METHOD OF
FIXING SEAT BRACKETS

1/8" Scale



INFANT
BLACKBOARD



DETAIL OF
FOOT-WASH

1/8" Scale



The Compost Co.

WAIHEKE RESOURCES TRUST

- A social enterprise generating 1 FTE.
- Diverting food waste from **25 Waiheke businesses**.
- Processing **50 tonnes of food** waste per year.
- Turning food waste into **nutrient-dense compost**.
- The site is modular and **non-permanent**.
- We plan on use of the council containers and planning the road face containers to have a **beautiful nature-based mural**.
- **Minimal noise** and well contained within the shipping container walls.
- **Tidy site** with all wheelie bins away in containers.
- Our bins are **rat-proofed** with Te Korowai o Waiheke, reciprocally providing trapping services as we compost their organic bait.

Onetangi Road

191

Cemetery

